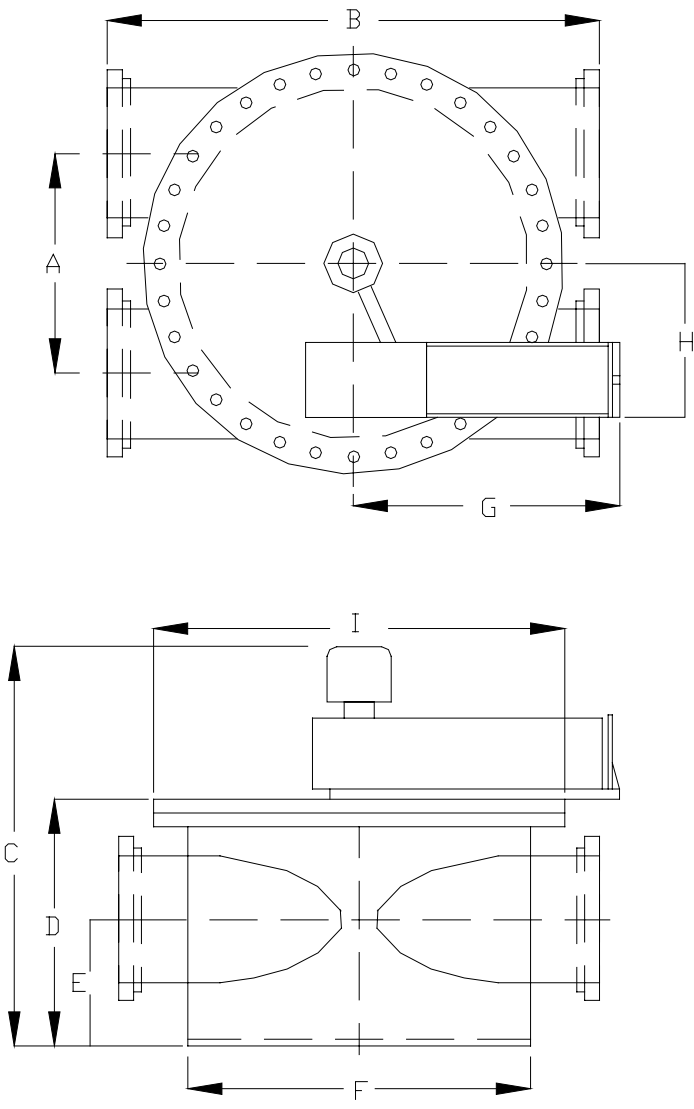


WATER TECHNOLOGY 6" 4-WAY REVERSING VALVE - STYLE HX



DIMENSIONS (IN INCHES):

A = 12	D = 13.1	G = 16.6
B = 27	E = 6.7	H = 9
C = 24.3	F = 20	I = 24

ATB SYSTEMS  
 WATER TECHNOLOGY OF PENSACOLA, INC.