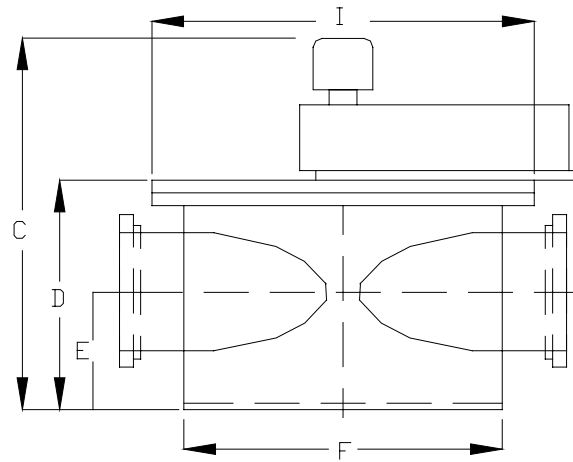
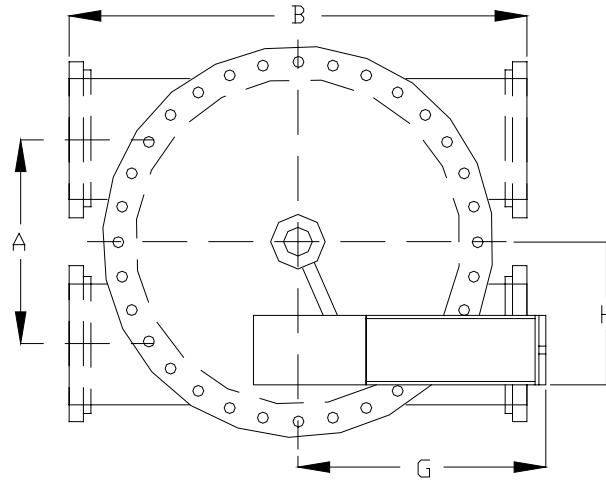


STANDARD 20" 4-WAY REVERSING VALVE  
(ALL DIMENSIONS IN INCHES)



DIMENSIONS (IN INCHES):

A = 31.5	D = 42	G = 34
B = 67	E = 21 1/4	H = 20
C = 56	F = 54	I = 59

ATB SYSTEMS  
WATER TECHNOLOGY OF PENSACOLA, INC.

WATERTECH@ATBSYSTEMS.COM  
TELEPHONE: (850) 477-4789

WWW.ATBSYSTEMS.COM  
FAX (850) 479-3056