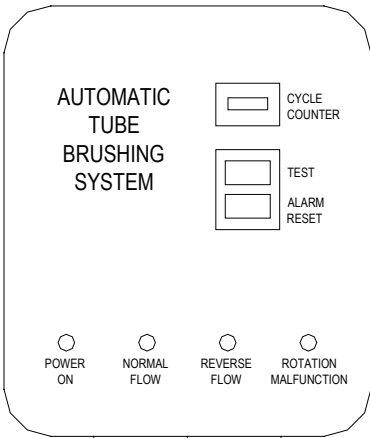


AUTOMATIC TUBE BRUSHING SYSTEM

CONTROL PANEL AND 4-WAY VALVE INSTALLATION SCHEMATIC

CONTROL PANEL



110 VAC
60 HZ
1/2 AMP

2 EA #14 AWG
SWITCHED PWR
TO SOLENOID

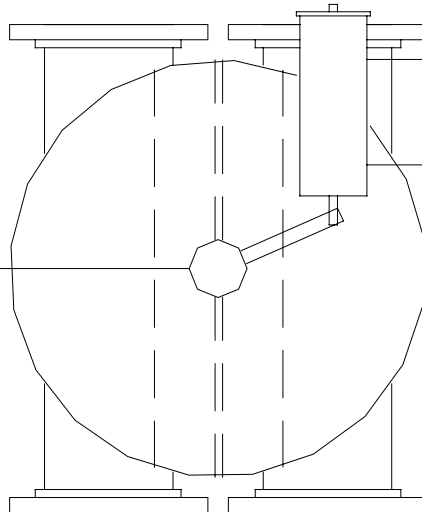
50-100 PSI REGULATED
DRY AIR SUPPLY
(END-USER PROVIDES)

SOLENOID VALVE:

CONTROLS REVERSING VALVE
TURNING SPEED WITH
EXHAUST RESTRICTORS
INSTALLED IN PORTS 3 AND 5.



4-WAY REVERSING VALVE



NORMALLY
PRESSURIZED LINE
(FROM PORT 2)

4 EA #14 AWG
SIGNAL FROM VALVE
POSITION INDICATOR
TO CONTROL PANEL

NOTE: CONNECT PORTS 2 AND 4 OF SOLENOID
TO ACTUATOR PORTS AS SHOWN.

ATB SYSTEMS

WATER TECHNOLOGY OF PENSACOLA, INC.

WATERTECH@ATBSYSTEMS.COM
TELEPHONE: (850) 477-4789

WWW.ATBSYSTEMS.COM
FAX (850) 479-3056